



Provincial Road



Bandung: Polytechnic (1920)



Parahyangan: Tea Plantation

JAVA HERITAGE TOUR

The exclusive and spectacular Java Heritage Tour combines the gems of Dutch colonial architecture with the wonders of Javanese culture and the world renowned excellence of Indonesian hospitality.

During the Heritage Tour, architecture historian Dr Pauline K.M. van Roosmalen, her circle of local friends and specialists and an Indonesian guide share their passion and knowledge about Indonesian culture and Dutch colonial built heritage with you.

The price of the Heritage Tour includes accommodation in charming and distinctive upmarket hotels, relaxing lunches and dinners that enable you to sample many of Indonesia's culinary delights and all transport (private bus, trains, *becak*, *andong*, *mikrolet*, and 'bus way').

If you want to join the Java Heritage Java, please contact Schiethart Reizen and/or PKMvR heritage research consultancy.

Testimonials

'Pauline has a wide and in depth knowledge of colonial architecture and town planning. She knows her way around [...] the Indonesian way of life and can open doors to out of the way and hidden architectural treasures.'

'Some of the beautiful hotels we stayed in had a link with the colonial past and most of the restaurants we visited were remarkable, not only for their excellent food, but also for their interior design.'

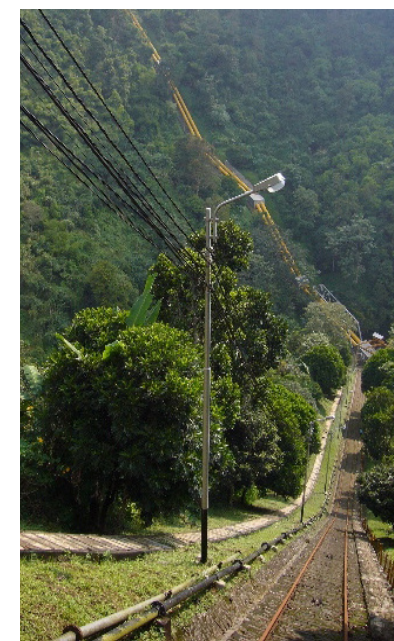
'Pauline is the ideal tour leader for heritage enthusiasts and professionals alike.'



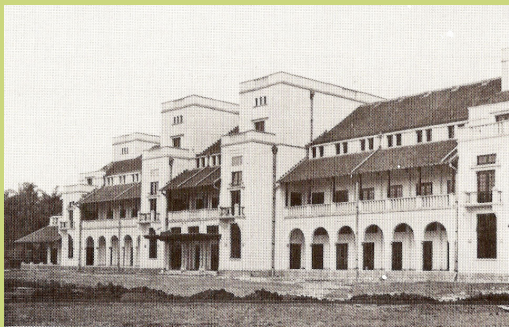
Jakarta: Javasche Bank (1909-1936)



Surabaya: Javasche Bank (1921)



Lamajan: Hydro Power Station (1917)



Tegal: Semarang-Cheribon Stoomtram Maatschappij (1911-1913)



Bandung: De Eerste Nederlandsch-Indische Spaarbank (1935)



Sundanese Food



Lembang: Villa Isola (1931)

P r o g r a m m e

This general programme mentions the areas rather than the individual objects that will be visited.

The programme may be subject to change.

Day 1 | ARRIVAL JAKARTA
Welcome dinner

Day 2 | Jakarta
VOC Districts: Sunda Kelapa, *Kota Tua*, Molenvliet (now: Jalan Gajah Mada)

Day 3 | Jakarta
Residential Districts: Weltevreden, Menteng, Kebayoran Baru

Day 4 | TRAVEL (Jakarta to Bandung)
Business and Commercial District: Alun-alun, Jalan Braga

Day 5 | Bandung & Lembang
Military, Administrative and Scientific Districts

Day 6 | Bandung Surroundings
Malabar: Tea Plantation
Lamajan: Hydro-electric Power Station

Day 7 | TRAVEL (Bandung to Cirebon) & Cirebon
Downtown Cirebon

Day 8 | TRAVEL (Cirebon to Semarang via Tegal and Pekalongan)
Tegal: Semarang Cheribon Stoomtram Maatschappij
Pekalongan: Pekalongan Batik Museum
Semarang: Tawang Station and Sobokartti People's Theatre

Day 9 | Semarang
Downtown Semarang: China Town (*Pecinan*) and Dutch VOC & Business District(*Kota Lama*)

Day 10 | Semarang & TRAVEL ((Semarang to Magelang via Ambarawa)
Semarang: Residential District New Candi
Ambarawa: Railway Museum

Day 11 | Magelang & Yogyakarta
Borobudur & 1/2 Day FREE PROGRAMME

Day 12 | TRAVEL: Yogyakarta & TRAVEL (Yogyakarta to Solo)
1/2 Day FREE PROGRAMME & Prambanan

Day 13 | Solo
Royal and down town Solo

Day 14 | TRAVEL (Solo to Malang) & Malang
Administrative District : Alun-alun Tugu (former J.P. Coenplein)

Day 15 | Malang
Residential and Commercial Districts: kampong Warnawarni, Alun-alun, Idjen and Dempo Boulevard

Day 16 | TRAVEL (Malang to Surabaya) & Surabaya
Harbour and Commercial District (Jembatan Merah)

Day 17 | Surabaya & DEPARTURE SURABAYA
Administrative, Residential and Commercial Districts: Simpang, Darmo and Tunjungan
Farewell lunch

Note

As Indonesia's tropical climate is sometimes relentless and the tour intense, it is important that you are in good health.



Jakarta: Station Square (1930s)



Surabaya: Insurance Company 'De Algemeene' (1900-1902)



Semarang: Nederlands-Indische Spoorweg Maatschappij (1902)



Semarang: People's Theater Sobokartti (1930)

Details regarding tour and programme

- The tour starts in Jakarta and ends in Surabaya;
- Hotels and restaurants are selected on the basis of quality, atmosphere, location, and availability;
- The price of the tour is based on accommodation for two people in a standard twin room;
- A surcharge applies to rooms;
- Participants receive a detailed a day-to-day programme and information about all hotels at least three weeks prior to the start of the tour;
- The tour is organised by PKMvR heritage research consultancy, Amsterdam and Smartine Indonesia Travel, Malang;
- The tour is offered to you by Schiethart Reizen, Alkmaar;
- Schiethart Reizen is a member of ANVR, SGR and Calamiteitenfonds;
- The ANVR stipulations apply to this tour.

Price

- The price of the tour depends on the number of participants and the time of year.
- Single room surcharge: € 495,00.

The price of the tour includes:

- All accommodation (16 nights);
- All local transport (except part of Days 11 and 12);
- All breakfast, lunches and dinners*;
- Bottled water on bus, in hotel rooms and during lunches and dinners;
- Indonesian SIM-card and limited credit (for non-Indonesians only);
- An expert and experienced tour leader;
- (Tips for) an experienced local guide;
- Local experts;
- Porters.

The price of the tour excludes:

- International and domestic airfares;
- Travel-, health and cancellation insurance;
- Drinks during lunches and dinners;
- Personal expenses (tips, mini-bar, laundry, etc.);
- Individual transport outside the tour's programme;
- Organisation of personal trips prior to, during or after the tour.

Tickets

International to Indonesia and domestic airline tickets in Indonesia can be purchased individually or via Schiethart Reizen.

Contact / Booking

Schiethart Reizen
Luttik Oudorp 25
1811 MT Alkmaar
T: 072-5204550
E: info@schiehartreizen.nl
I: www.schiehartreizen.nl



Copyright

© 2017 PKMvR heritage research consultancy/
Pauline K.M. van Roosmalen. Nothing from this brochure nor the website of PKMvR heritage research consultancy may be adopted, multiplied and/or publicised via print, photocopy, microfilm or any other means without written permission from PKMvR heritage research consultancy.